



GMT Constitutional Area 1, Group N

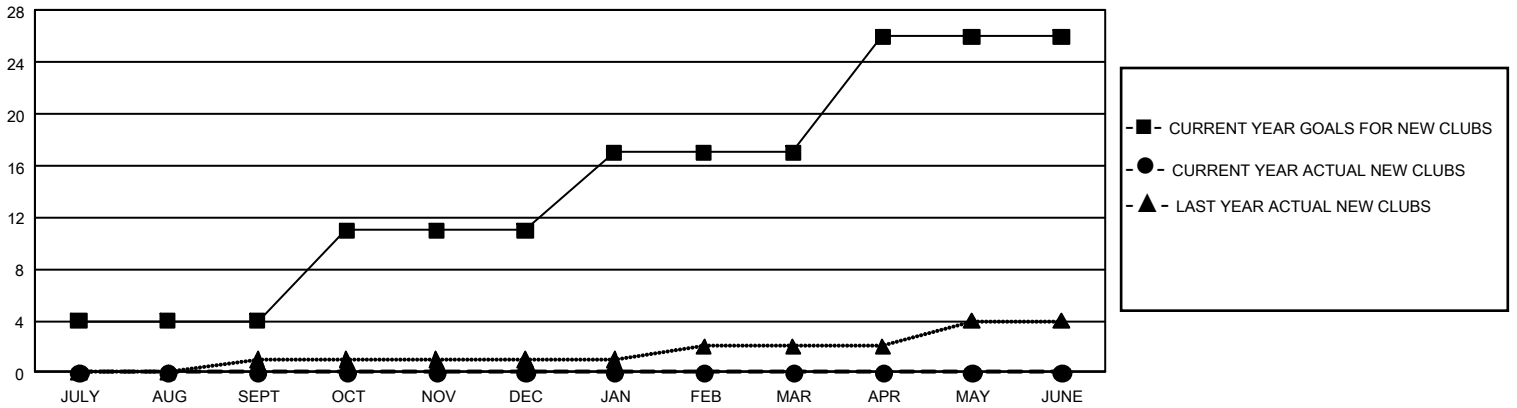
GMT: OPEN

REPORT DOES NOT INCLUDE CLUBS IN UNDISTRICTED AREAS.

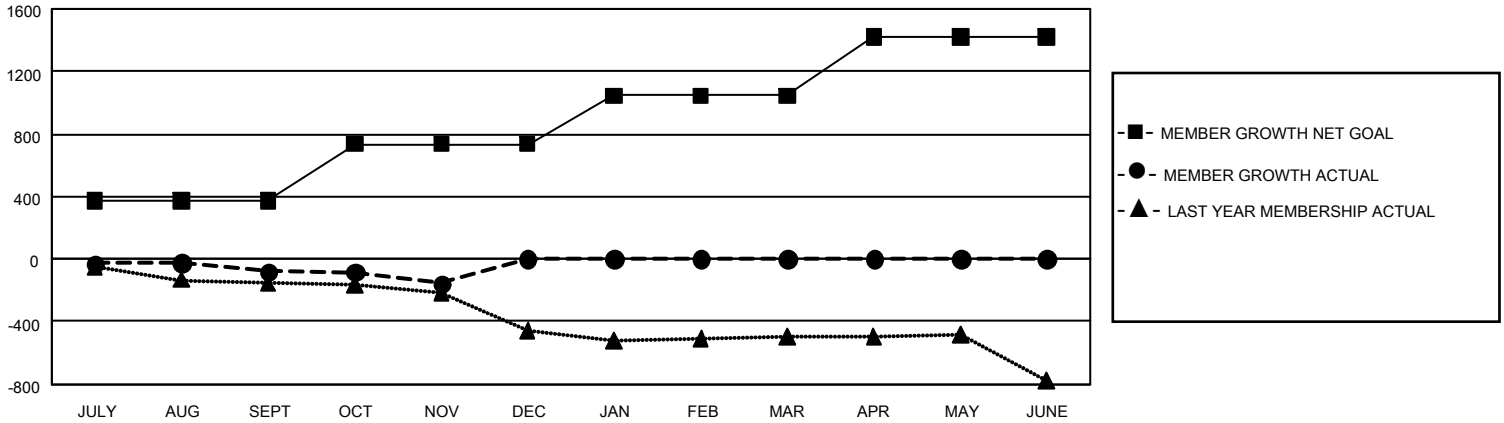
Clubs			
RESULTS FOR 2019-2020			
QUARTER	NEW CLUB GOAL	NEW CLUBS	DROPPED CLUBS
JULY/AUG/SEPT	12	0	1
OCT/NOV/DEC	21	0	4
JAN/FEB/MAR	18	0	0
APR/MAY/JUNE	27	0	0

Members			
RESULTS FOR 2019-2020			
QUARTER	MEMBER GROWTH NET GOAL	MEMBER GROWTH ACTUAL	DROPPED MEMBERS ACTUAL (including transfers)
JULY/AUG/SEPT	1,113	370	407
OCT/NOV/DEC	1,095	181	226
JAN/FEB/MAR	933	0	0
APR/MAY/JUNE	1,122	0	0

GOALS AND ACTUAL NEW CLUBS CUMULATIVE



GOALS AND ACTUAL MEMBERS CUMULATIVE



DROPPED CLUBS: 5	212 CLUBS OF 596 ADDED 1 OR MORE NEW MEMBERS	<u>GENDER DISTRIBUTION</u>	
<u>DROPPED MEMBERS</u>		MALE	9,241 (66.95%)
DECEASED	73	FEMALE	4,561 (33.05%)
CLUB CANCELLED	30	TOTAL FAMILY UNIT MEMBERS 2,635	
OTHER	530		
TOTAL	633		
CLICK HERE FOR CUMULATIVE MEMBERSHIP DATA			